

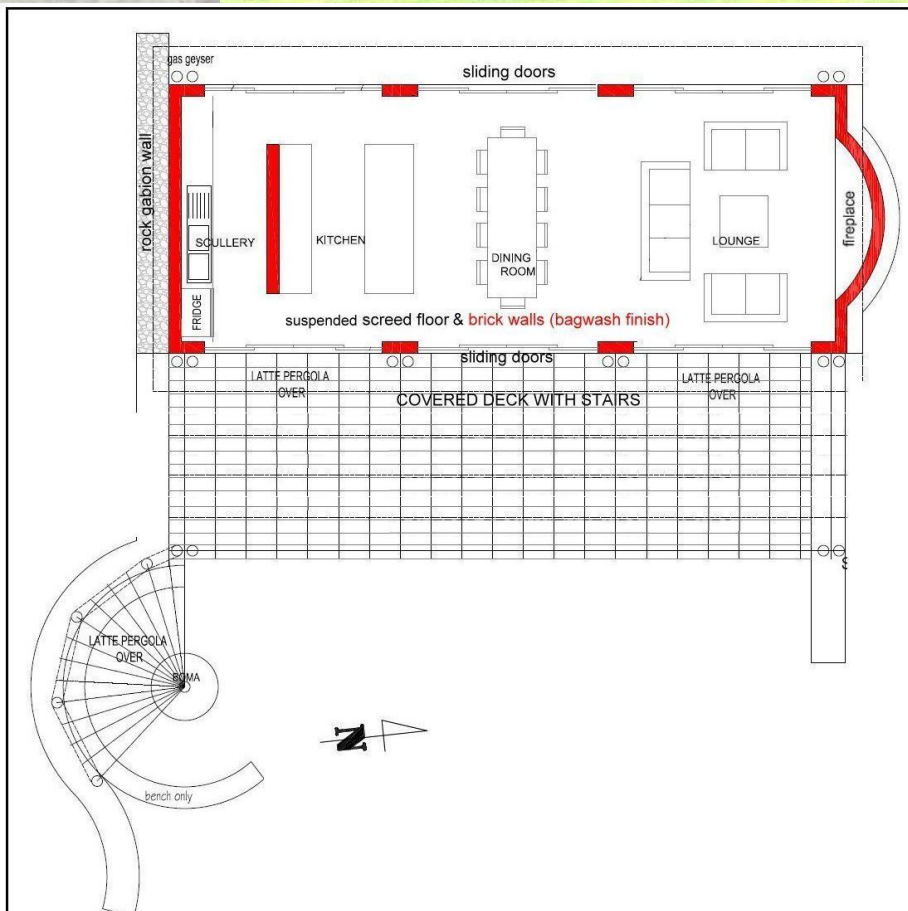
Share a Lodge
@R300 000
R150 000 Joint Purchase
 Own a 10% share, a week every 2 months
 Shared costs @ actual minimum

With friends and family more often than not sharing a lodge at Boschhoek, we receive many requests from nature lovers also wishing to share with likeminded others. For those, we have selected a stunning stand at Kudu Ridge B with jaw dropping views over Boschhoek.

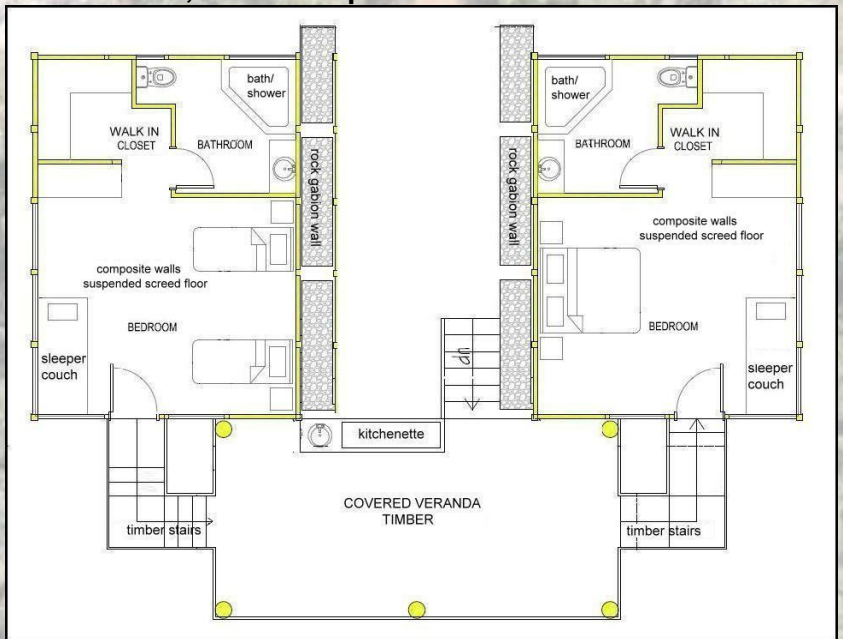


Here we are currently building a lovely furnished bush lodge for shared ownership, at a typical cost of R300 000.

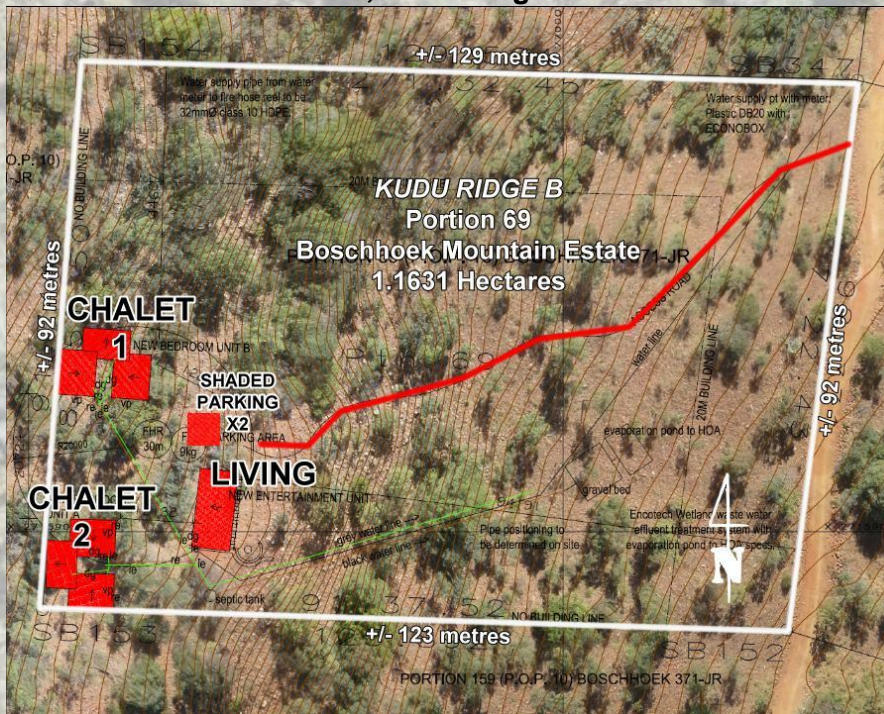
It consists of three parts. The first is a living area (lounge, dining, kitchen, scullery) and boma perched above the view.



The second and third elements are two identical 4-6 bed sleeper chalets tucked away amongst the trees. These include two bedrooms, each with its own bathroom, a covered patio and a coffee kitchenette.



Seen from above, the setting looks as follows:



Inasfar as the *modus operandi* is concerned, we complete and furnish the lodge, and the lodge together with its stand is owned by a company with 10 shareholders. The shareholders' agreement regulates the use roster. The lodge is yours to use every 10th week (i.e. just more than 2 months' interval) for a week with an annual forward shift, and shareholders can exchange weeks amongst themselves.

The shareholders each contribute approximately R60 per month towards the Boschhoek levy, as well as an amount to provide for insurance, maintenance and municipal property tax for the property in question. Jandre and Ane and their team are available to service the lodge (dishes, bedding, etc). For this every shareholder pays according to his usage - arrival or departure only, or daily.

The principle is to limit running and servicing costs to the actual minimum, and not to profit from these as often happens.

The lodge as configured above provides for 8-12 beds in the two sleeper chalets in total. Should you wish, you could also invite friends to use the second sleeper chalet. If you have family or friends with whom you are comfortable to share with on a regular basis, you could purchase a share together, each using their own sleeper chalet. In that scenario the cost per family would be R150 000, and one would split the running costs.

Should you ever need to move on, a shareholder is free to sell his share.

Kindly contact Herbert Smith (083)654-8201 herbert@boschhoekmountain.co.za for more information.